

Knowledge Organiser – Year 4 Sculpture

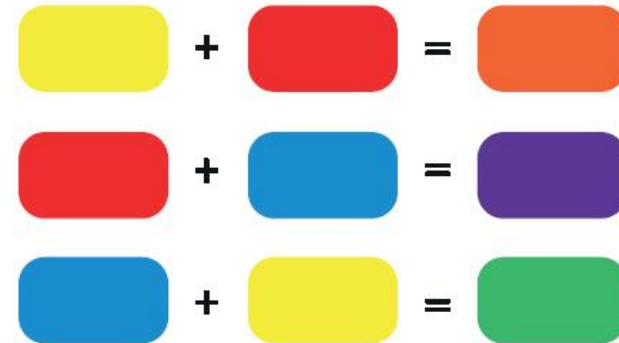


Sculpture

Composition	The placement or arrangement of visual elements in a work of art.
Geometric pattern	A pattern formed of geometric shapes such as circles, rectangles, squares and triangles.
Optical effect	The arrangement of shapes, colours and patterns to create images that look as if they are moving or blurring.
Sketch	A quick, light drawing or painting without detail.
Wax resist	Drawing with wax then painting over it. The areas covered in wax will not allow the paint to settle.
Upcycle	To repurpose old items or junk into something of more value. For example a product or art work.
Recycle	To reuse things which would have been thrown away.
Contrast (art)	Very different to, or the opposite of.

Key facts

The primary colours are red, blue and yellow.



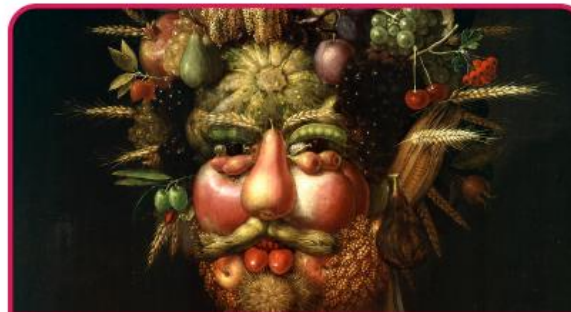
Secondary colours are mixed from the primary colours and are orange, purple and green.

Artists' work looked at:



El Anatsui
An artist and sculptor from Ghana.

© Gift of the Alliance of the Indianapolis Museum of Art / Bridgeman Images



Giuseppe Arcimboldo
An Italian painter best known for creating imaginative portrait heads made of objects such as fruits, vegetables and flowers.

© Derek Bayes / Bridgeman Images



Sam Francis
An American painter and printmaker.
© Sam Francis Foundation, California / DACS 2020 Sam Francis, Untitled, 1958, Photo © Christie's Images / Bridgeman Images

Sokari Douglas Camp

A sculptor who works primarily with steel. Her sculptures refer to her Nigerian heritage and international issues.